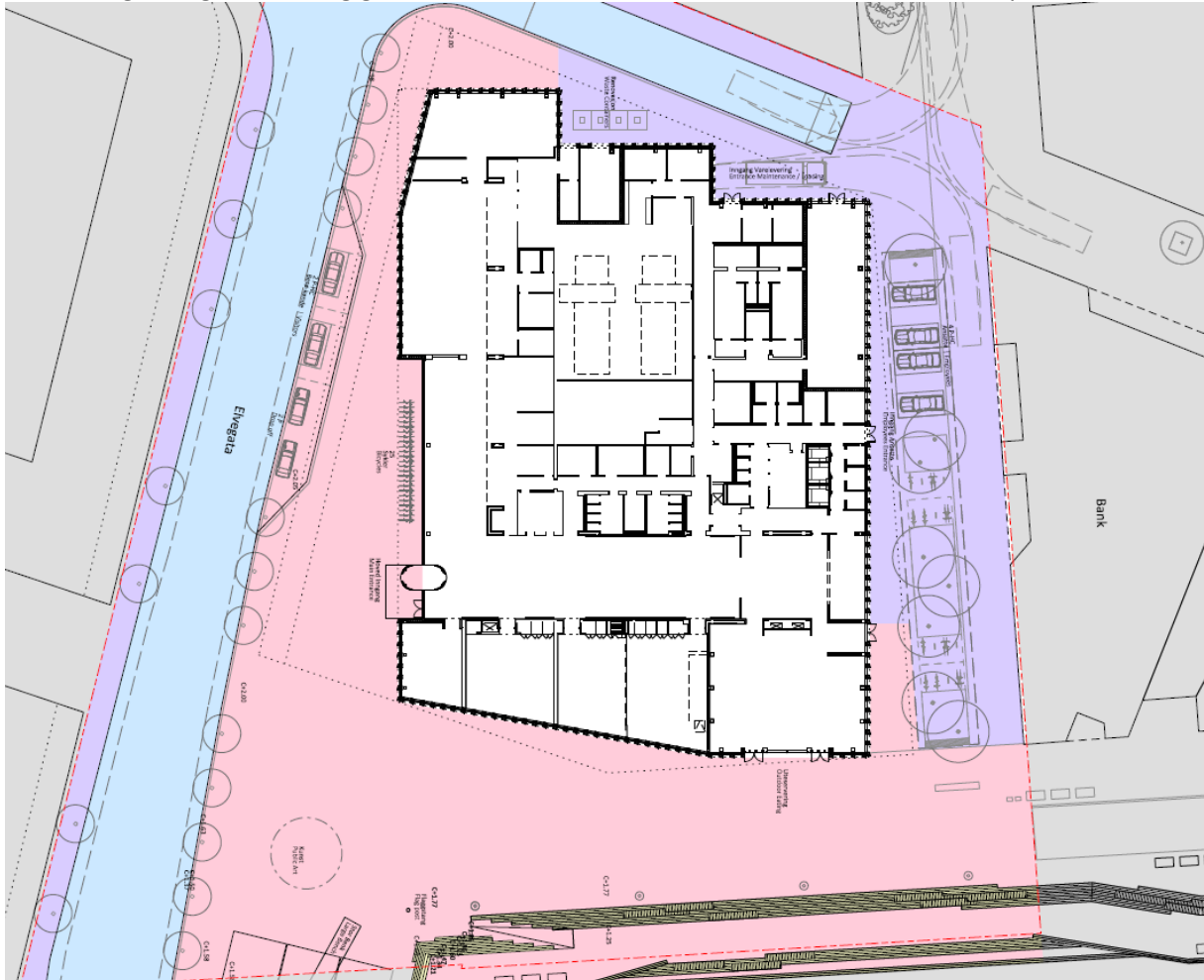


Sandnes New Town Hall – plans for outdoor area

The Art Plan describes the area around Sandnes New Town Hall and some of the regulations and premises regarding use of the area. This document supplements with plans, illustrations and photos relating to plans for the area.

The Zoning Plan gives binding guidelines for the use of the area. Illustration from the plan:



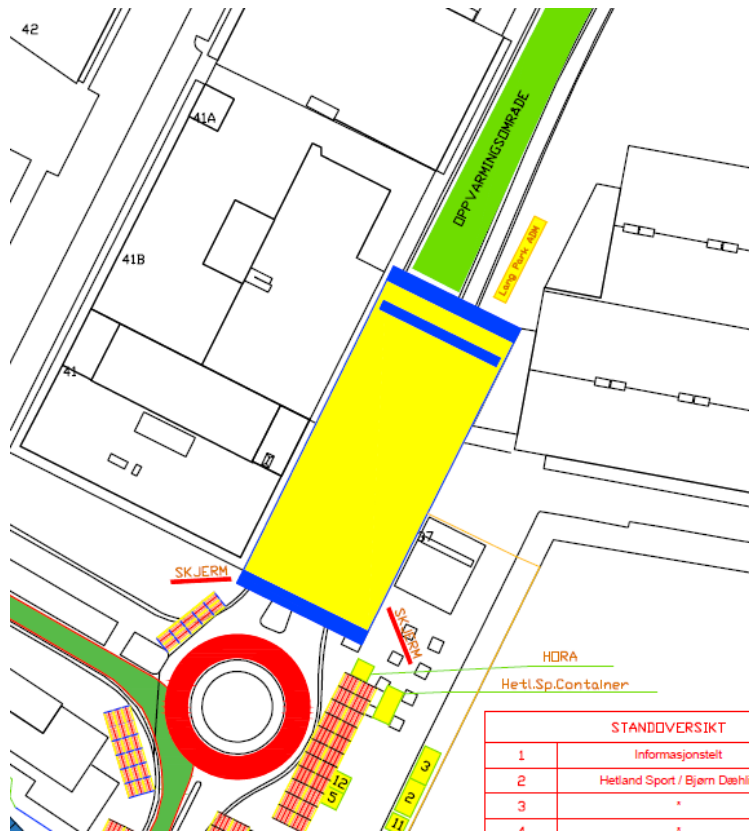
Areas for disembarking from vehicles are regulated along Elvegata to the West and parking for the handicapped in Karen Thorsens gate at the East side of the building. There are also guidelines for the use of materials for the floor of the streets, granite to the West and South and concrete East and North of the building.

Asphalt has been used in the promenade along the harbour and dispensation has been given for that to remain.

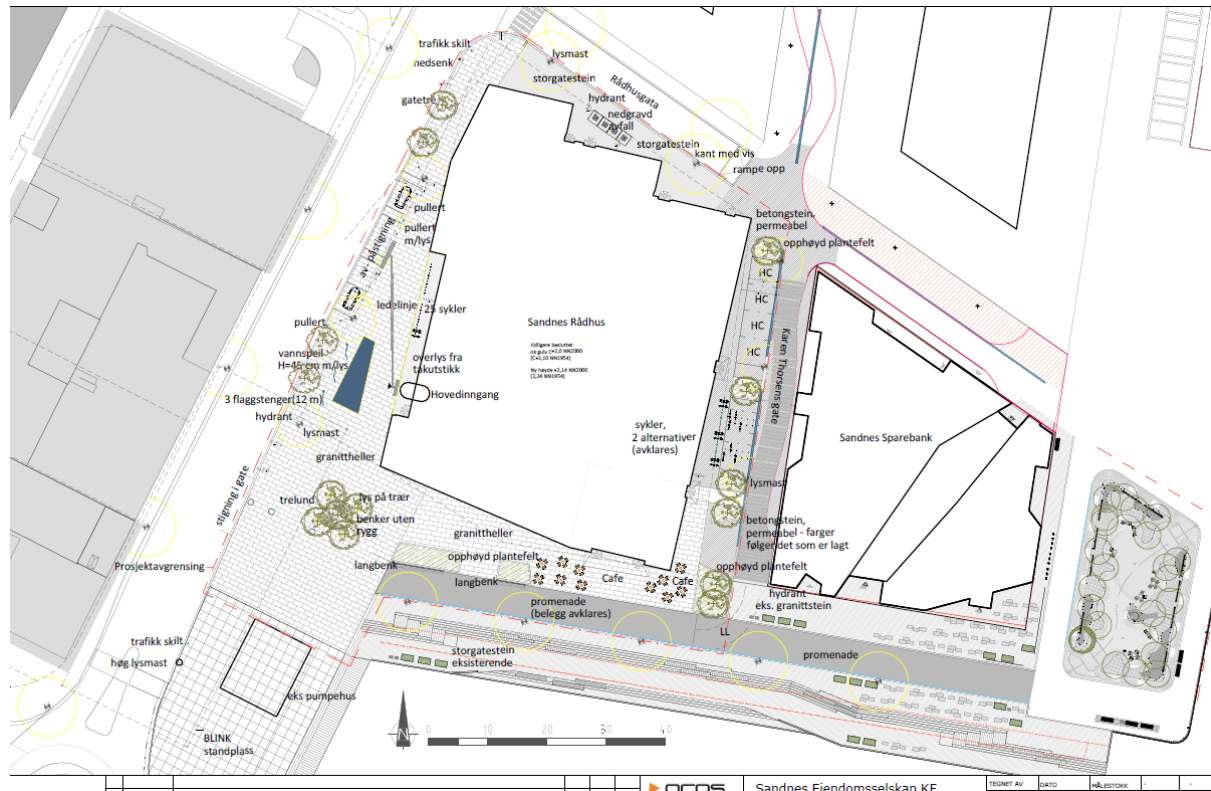
Superunion/Spacegroup has written an analysis of Sandnes city centre, including Ruten, and this also provides ideas for the layout of the area.

The architects of Sandnes New Town Hall have their own recommendations, which must be taken into consideration when planning for the area.

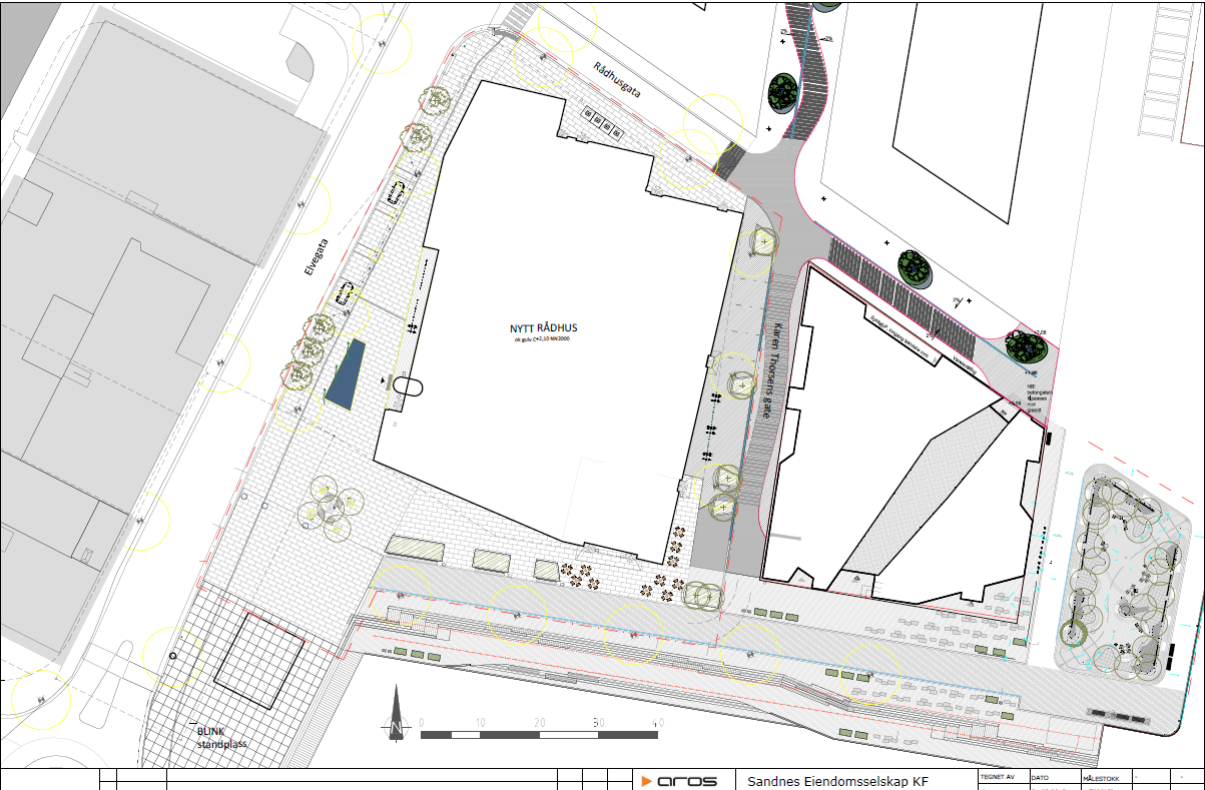
The **Blink biathlon festival** is important to the city and space for shooting at targets will have to be considered when placing permanent features such as lampposts and trees. The illustration below shows the area used by Blink.



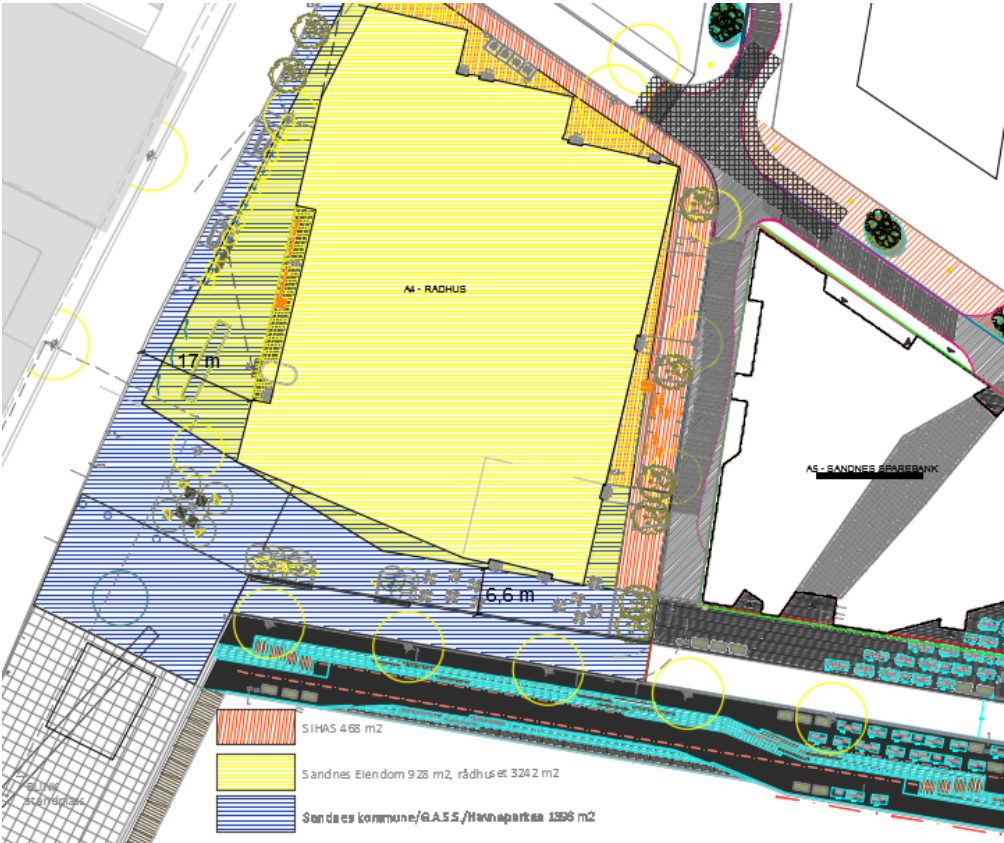
Plan for the outdoor area was passed by the City Council in February 2017 and looks like this:



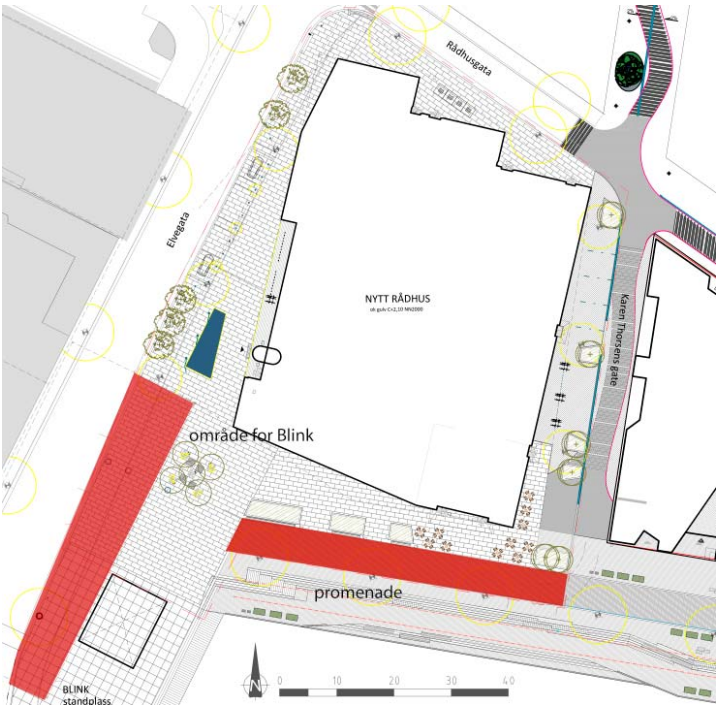
Some details and minor adjustments are still underway regarding the outdoor area. By June 2017, the plan looks like this:



This plan was drawn up to give a better understanding of the different areas and distances involved:



The two areas marked in red below are used by the Blink festival and the promenade, and they will not be suitable for placement of art installations, unless integrated into the ground with nothing penetrating the surface. This also goes for zones for pedestrians such as sidewalks and entrances.



Materials and designs

Some details are yet to be finalized and adjustments may occur.

Granite floor and curbs

The area along the fronts of Sandnes New Town Hall, West and South will be covered with granite tiles of differing widths and lengths in varying shades of grey.



Details such as fittings around the entrance must be done with a high degree of craftsmanship and curbs must be 30 cm slabs of granite.



Concrete slabs

In Karen Thorsens gate the concrete flooring should match in type and colour those that are already in place:



Planters

Planters in the area facing the harbour should be metal and mirror the planters already in place at the neighbouring bank building. They will be larger and higher in order to give a proper green feature, as well as shield against the wind for the benches placed next to the planters.

Planters in Karen Thorsens gate will mainly be granite, but possibly with an occasional hint of wood and metal.



Trees

Trees chosen will have no foliage hindering sightlines for pedestrians and they should provide colours and signs of life throughout the different seasons. At the base will be a protective metal grate in steel or castings.





Benches

Made in steel and wood.



Lighting and bollards

The disembarking spaces in Elvegat will be separated from the sidewalk by bollards. Some of these will have lights and add to the lighting for people embarking and disembarking.



The lampposts in Elvegatve will be approximately 6 m high and they will project light both horizontally and downwards.



The lighting fixtures along the harbour and in Karen Thorsens gate will be:



Bicycle parking and waste bins
Will be made in steel, colour RAL 5008

