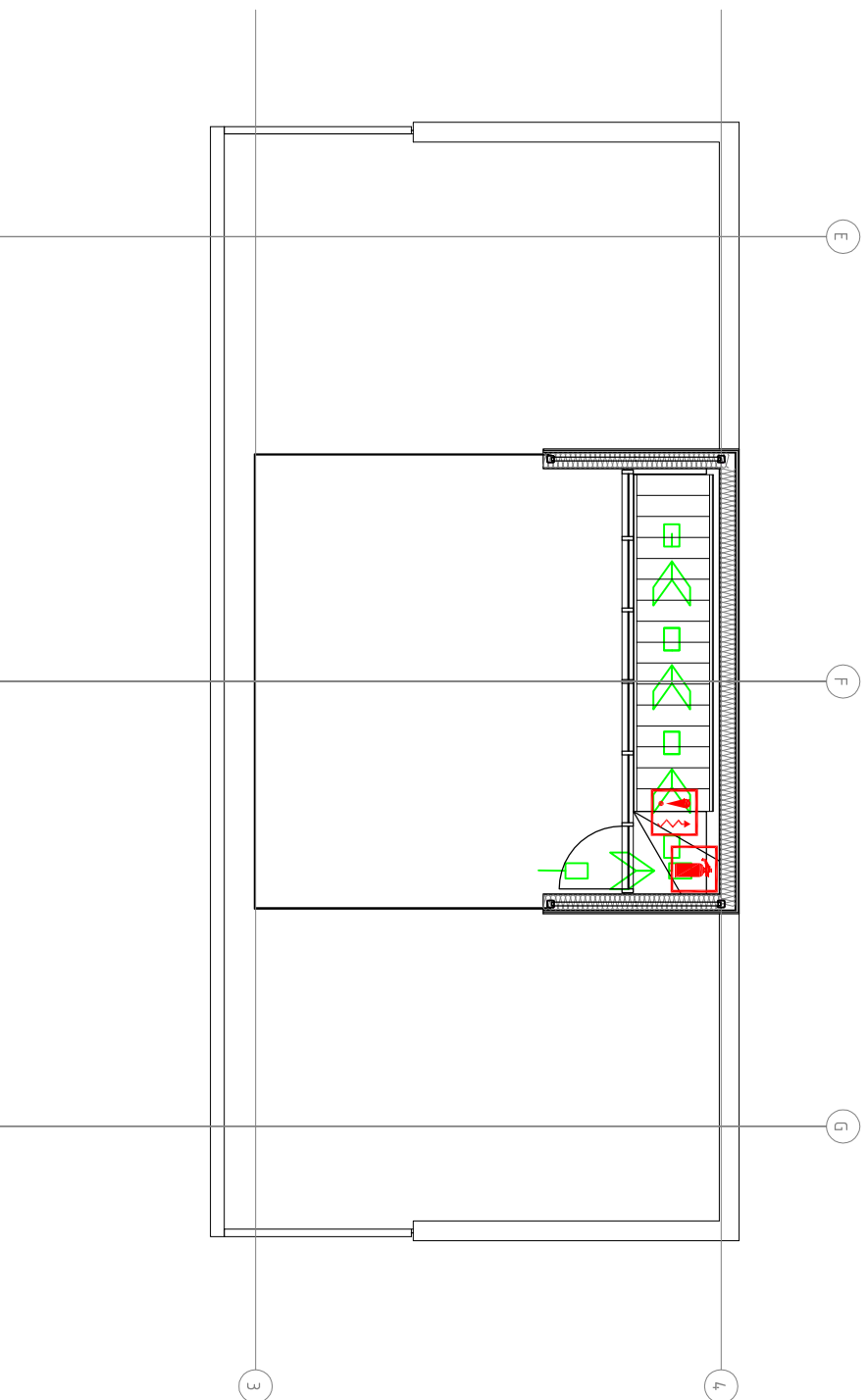











BRANNPLAN - MEDIAHUS TAK



TEGNFORKLARING - BRANNPLAN

-  Branncelle EI 60
-  Rømningsvei
-  Rømningsutgang
-  Brannvesenets innsatsvei

-  Brannsentral 3 etg.
-  Røykdetektor
-  Manuell melder
-  Brannslangeskap 25 m
-  Brannsløkker

DØRKLASSER

- 1** EI 30-Csa [B 30 med terskel]
- 2** EI 60 Sa [B60 med terskel]

KONTRAKT		216127		BRANN TAK		0	
SANDNES KOMMUNE				SANDNES IDRETTSPARK - MEDIAHUS			
BRANNPLAN				PLAN TAK			
1 : 100				